



System 96



Peggy Pettigrew Stewart

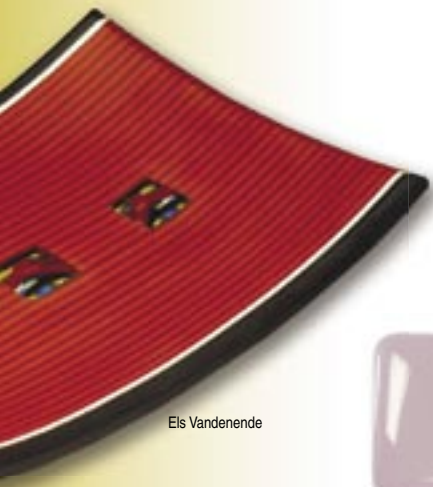
System 96 is not a company, it is a family. A family of products designed and produced to work together, then tested to ensure their harmony.

The products are materials for the Hot Glass arts—perfect for the beginner, outstanding for the professional. Made by a group of companies dedicated to making the craft affordable, accessible and technically friendly to everyone who would take part.

Welcome.

Opalescents

Reflective Opals are a core material in every segment of the craft. They are the pure expression of visible color and, combined with Transparents, contribute the depth and refraction that makes art glass so appealing.



Els Vandenberghe

Few crafts are as satisfying and addictive as Hot Glass. The melting of assorted glass pieces from a cold and static stack into one finished form is at first intriguing, then hypnotic, and finally, remarkable.

Home crafters are passionate about their glass. It can be both the easiest and the most complex of art forms. Take a piece of glass. Decorate it with a few smaller pieces—by design or even haphazardly. Then show it the transforming magic of intensely high heat. Watch it soften, take new shape, transition, and finally morph into a new thing entirely. Endlessly fascinating, often surprising, always glass.



Jack Bowman



230-76SF
Cobalt Blue



60-2502-96
Red



240-72SF
Mauve



260-72SF
Yellow



210-72SF
Almond



291-61SF
Champagne



60-782-96
Olive Green



60-602-96
Flame



226-74SF
Amazon Green



230-72SF
Medium Blue



60-520-96
Plum



60-070-96
Cloud



220-76SF
Dark Green



60-355-96
Marigold



238-72SF
Alpine Blue



290-72SF
Cotton Candy Pink



60-755-96
Fern Green



60-421-96
Riviera Blue



234-72SF
Cotton Candy Grape



200SF
White



222-72SF
Pastel Green



233-74SF
Turquoise Blue



240-74SF
Lilac



233-72SF
Turquoise Green

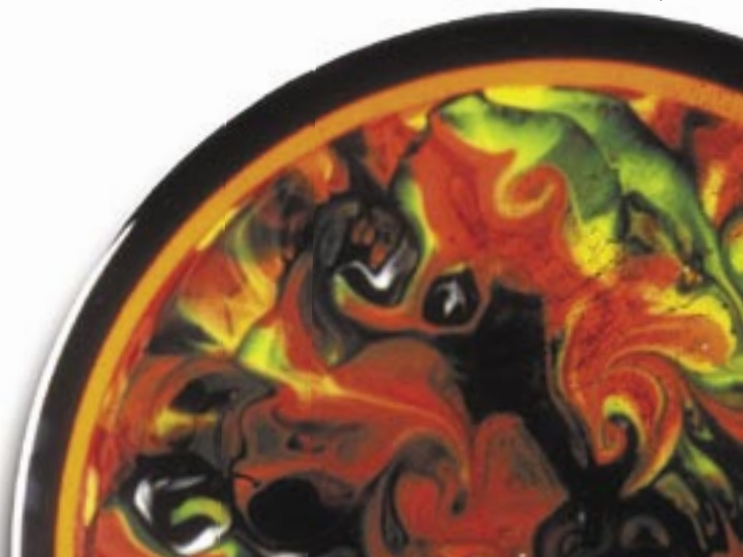


60-2702-96
Orange



1009SF
Black

Jerry Meske



Transparents

Glass is a manipulator of light and translucency is its very essence. System 96 Transparent colors are bright, forgiving to cut, stable at remelt, and deliver consistent, dependable results. The foundation of a glass worker's palette.



100SFS Clear



110.2SF Pale Amber



130.8SF Pale Blue



136SF Dark Blue



110.8SF Medium Amber



533-3SF Deep Aqua



142SF Light Purple



146SF Dark Purple



161SF Yellow



171SF Orange



140.8SF Pale Purple



180.8SF Pale Gray



518-1SF Bronze



523-2SF Teal



523-8SF Hunter



526-2SF Moss Green



528-1SF Sea Green



121SF Light Green



534-2SF Violet



151SF Cherry Red



538-4SF Steel Blue



591-1SF Champagne



132SF Light Blue



111SF Dark Amber



125SF Dark Green



528-4SF Olive Green



538-6SF Navy Blue



533-1SF Sky Blue



543-2SF Grape



100SFXTL Crystal Clear



Transparency contributes yet another dimension: sixty colors become six hundred as the artist learns to overlap and overlay.



Jeff Phelps

Clear Sheet Glass

A multitude of Clear choices spawns endless possibilities and ensures zero limitations within the System 96 family. This indispensable material is supplied Hand rolled, Machine rolled, Thick, Thin, decolorized and clear as crystal in a remarkable array of sizes.

Product #	Description	Sheet Sizes	Thickness
60-00-96	Clear Hand Rolled Flat*	24 x 33" (61 x 84cm)	.125" (3mm)
61-00-96Thin	Clear Hand Rolled Thin*	24 x 17" (61 x 43cm)	.070" (1.8mm)
100SFS	Clear Fusing Standard*	24 x 24" & 24 x 48" up to 30 x 72" (61 x 61cm & 61 x 122cm up to 76 x 183cm)	.125" (3mm)
100SFL	Clear Fusing Standard, Thin	24 x 24", 24 x 48" (61 x 61cm & 61 x 122cm)	.078" (2mm)
100SFXTL	Crystal Clear	24 x 24" & 24 x 48" up to 30 x 72" (61 x 61cm & 61 x 122cm up to 76 x 183cm)	.125" (3mm)
100SFXTL/DT	Crystal Clear Double-Thick	24 x 24" & 24 x 48" up to 30 x 72" (61 x 61cm & 61 x 122cm up to 76 x 183cm)	.195" (5mm)
100DT	Clear Double-Thick	24 x 24 & 24 up to 30 x 72" (61 x 61cm & 61 x 122cm up to 76 x 183cm)	.195" (5mm)

*Denotes availability in Iridescent

Transparent Tints These six soft pastels are sheet forms of Casting Billet colors. Ideal for shading, shadowing and subtle tone imagery, they are available in both 3mm and 1.8mm thicknesses, either uncoated or with a Rainbow Iridescent finish.



60-404-96 Sapphire



60-476-96 Neon Orchid



60-774-96 Ming Green



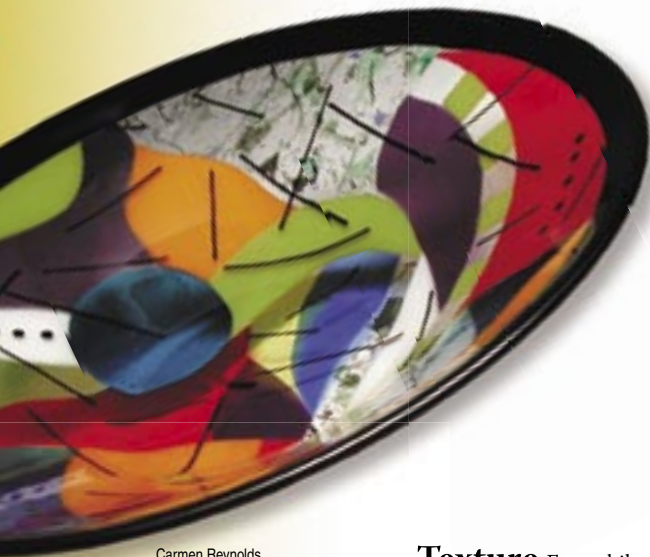
60-707-96 Citron



60-906-96 Straw



60-015-96 Urobium Pink



Carmen Reynolds

Fracture/Streamer

Graphic in and of themselves, these hand-cast sheets add striking character and complexity wherever they are used. Fully compatible across the System 96 family.



11-29-96 Clear w/ Green & Pink Fractures/ Green Streamers



11-45-96 Clear w/ Green & Red Fractures/ Green Streamers



11-25-96 Clear w/ Green Fractures/ Green Streamers



11-51-96 Clear w/ Green/ Blue/ Purple Fractures/ Green Streamers

Texture Every kiln forming project involves surface relief considerations. Textured glass adds another element of relief, plus character from the texture itself. Attention to firing will retain the desired level of detail.

Five textures are currently available in both Black and Clear 3mm glass. The Granite glasses are available in Iridescent, and the Hand rolled Flat textures come in 1.8mm Thin, 3mm Iridescent, and Thin Iridescent versions.



51-00-96 Clear Granite Ripple



60-00-96 Clear Hand Rolled Flat



65-00-96 Clear Granite



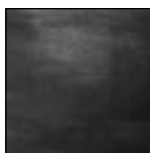
70-00-96 Clear Fibroid



80-00-96 Clear Radium



51-56-96 Black Granite Ripple



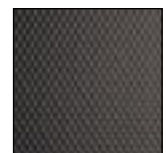
60-56-96 Black Hand Rolled Flat



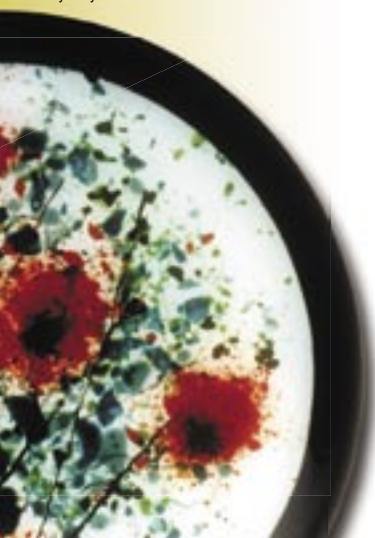
65-56-96 Black Granite



70-56-96 Black Fibroid



80-56-96 Black Radium



Patty Gray

Thin Sheet Glass

Standard System 96 sheets are about 3mm (1/8-inch) thick. These 1.8 and 2mm Thin sheets provide an added capacity for delicacy, weight reduction, stacking precision, and color overlay.



Carmen Reynolds

1009SFL Black	100SFL Clear	110.2SFL Pale Amber	110.8SFL Med.Amber	121SFL Light Green	125SFL Dark Green	130.8SFL Pale Blue	
132SFL Light Blue	136SFL Dark Blue	140.8SFL Pale Purple	142SFL Light Purple	151SFL Cherry Red	161SFL Yellow	171SFL Orange	210-72SFL Almond
200SFL White Opal	230-76SFL Cobalt Opal	518-1SFL Bronze	528-4SFL Olive Green	523-8SFL Hunter	526-2SFL Moss Green	528-1SFL Sea Green	523-2SFL Teal Green
533-1SFL Sky Blue	533-3SFL Deep Aqua	534-2SFL Violet	538-6SFL Navy	61-00-96 Clear	61-015-96 Urobium Pink	61-402-96 Aqua Blue	538-4SFL Steel Blue
543-2SFL Grape	220-76SFL Dk. Green Opal	61-404-96 Sapphire	61-476-96 Neon Orchid	61-707-96 Citron	61-774-96 Ming Green	61-906-96 Straw	240-72SFL Mauve Opal
61-015-96IR Urobium Pink Irid	61-476-96IR Neon Orchid Irid	61-402-96IR Aqua Blue Irid	61-707-96IR Citron Irid	61-774-96IR Ming Green Irid	61-906-96IR Straw Irid	61-56-96 Black	
61-56-96IR Black Irid	61-00-96IR Clear Irid						

Iridescent Sheet Glass

Iridescent glasses have been flash-fired with a micro-thin layer of metallic crystal, creating a radiant exhibition of jewel-like color across the surface. System 96 Hi-Fire iridescents are permanently bonded to ensure retention and maturity at full fuse temperatures. Food safe.



I/1009SF Black	I/518-1SF Bronze	I/151SF Cherry Red	I/110.2SF Pale Amber	I/130.8SF Pale Blue	I/136SF Dark Blue	
I/200SF White Opal	60-00-96IR Clear Hand Rolled Flat	60-015-96IR Urobium Pink	60-476-96IR Neon Orchid	60-707-96IR Citron	60-774-96IR Ming Green	
60-906-96IR Straw	65-00-96IR Clear Granite	65-56-96IR Black Granite	60-56-96IR Black Hand Rolled Flat	60-402-96IR Aqua Blue	60-404-96IR Sapphire	I/100SFS Clear

Bobby Valdez

Gerry Newcomb



Casting Billets About the size of a paperback book, these carefully made glass ingots are the finest casting material available. Colors: Water Clear, Straw, Zinc, Citron, Sapphire, Aqua, Urobium Pink, Ming Green and Neon Orchid. 6 x 6 x .75" (15 x 23 x 8cm).

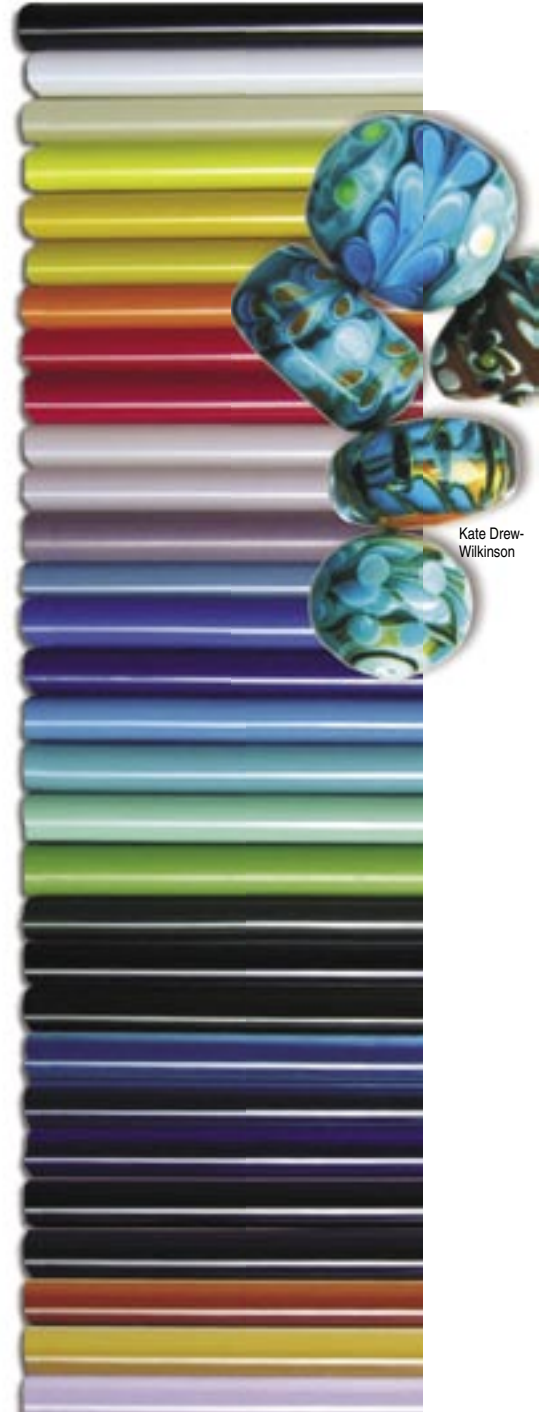


Chico Art Glass

Studio Nuggets Specifically formulated for remelting, these 1/2-oz crystal-clear glass pellets are ideal for blowing, casting, fusing and crucibles. Safe and easy to handle, they are consistently stable, energy efficient and completely compatible with all other System 96 products. Very cost effective.

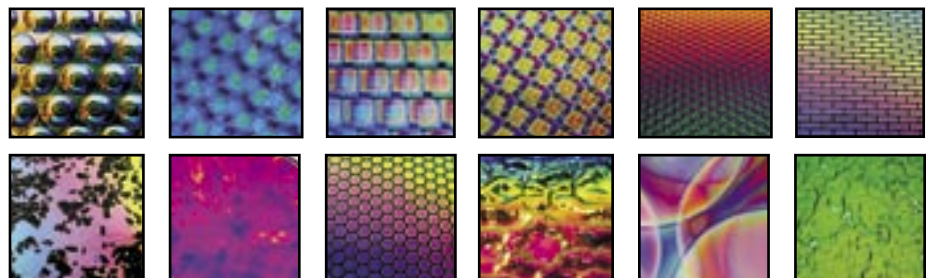


Glass Rods Pencil-thick (5.5cm) dowels add yet another form to the glassworker's toolkit. 19.5" (50cm) long, every Transparent and Opalescent color in the System 96 family will be available in Rod form. For torch work, blowing, fusing, slumping and casting.



Kate Drew-Wilkinson

Dichroic The ultra-thin-layer quartz and metallic coatings on Dichroic glass are applied with electron beams in a vacuum chamber to create the most vibrant, space-age colors imaginable. The transmitted and reflective character of each coating are completely different from one another. Specifically made for use in all hot glass applications, the selection of colors, patterns and textures is vast.

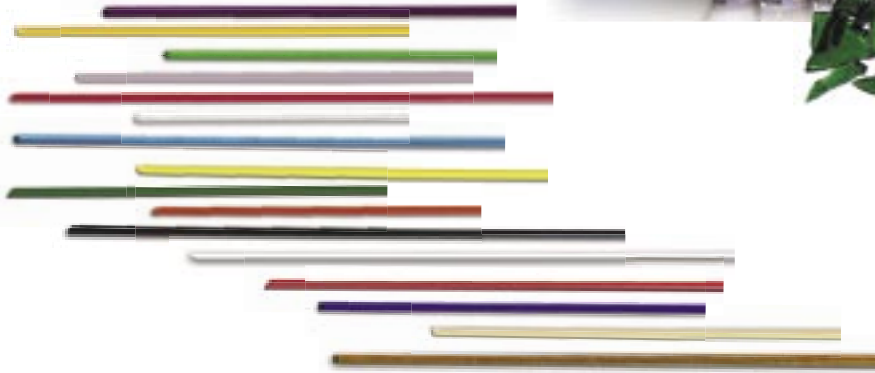


Diane Demmit

Glass Frit

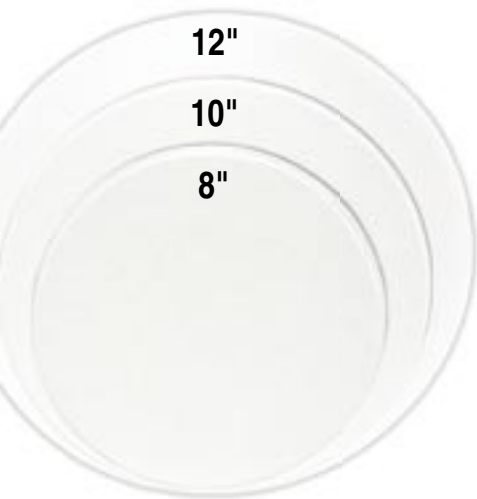
A staple of the hot glass arts, Frit plays a role in virtually every segment of the craft. The product is System 96 sheet glass, clean-crushed and screened to specific particle sizes for a variety of applications. Sold in 8.5 oz (240g) and 4 lb (1.82kg) jars, plus 40 lb (18.2kg) pails.

Five particle sizes are available in every color: Powder, Fine, Medium, Coarse, and Mosaic.



Glass Stringer

Delicate strands of color permit fine linear detail and unlimited creative design possibilities. Use straight from the tube or shape with a flame. Sold in 3 oz (85g) clear plastic tubes, in single colors or mixed "Mardi gras" pack.



12"
10"
8"

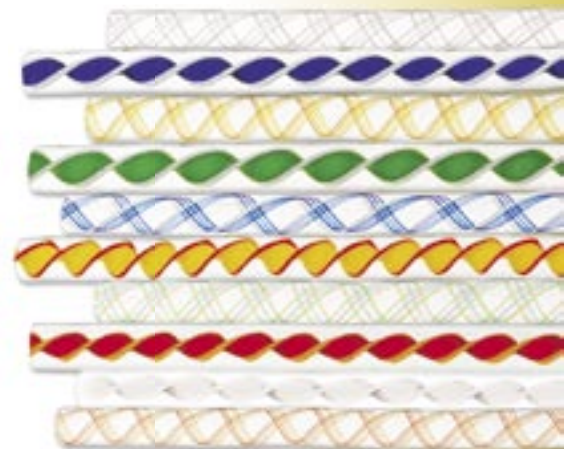
Pre-Cut Rounds

Pre-cut clear circles reduce prep time and eliminate scrap. Three diameters are available in standard 100SFS clear: 8, 10, and 12-inch (20, 25 & 30.5cm). Use 10-inch diameter Double-Thick (5mm) clear ROUNDS for two-layer bases and zero bubbles.



Glass Noodles

These flat, fettuccini-like glass Noodles are about 3/16" (5mm) wide and 16.5" (42cm) long. Snap them with your fingers or nip them to desired length, then use them as straight design lines or bend them in a flame. Versatile, fun and indispensable. Approximately 12 Noodles per 3 oz (85g) clear plastic tube, in single colors or mixed "Mardi gras" pack.



Hand-pulled Glass Cane

For instant artistic decoration, consider hand-pulled Filigree cane. Two styles to choose from: Americano (twisted ribbon) and Zanfirico (twisted colored threads). Available in 5 colors, there are six 20" (52cm) canes per tube, 8-11mm diameter. Nip to desired length.



The greater your expertise, the more critical your choice of materials. We know that. System 96 was *designed* to be melted and reformed. We created the attributes not to be all things to all people, but to offer a few crucial details that others overlooked:

Compatibility with the vast world of glass blowing materials and

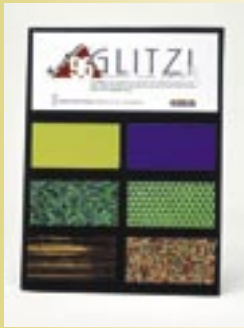
resources. Viscosity that retains fine detail right into combing temperatures. Working range that makes possible the tiny differences that can mark a true professional. And we brought sheet sizes that open up BIG possibilities, cutability that lowers costs, and a price that is substantially less than competing products.

We're not all things to all people. But ask around. System 96 users are ardent devotees. They've discovered how big the little differences can be.



Sample Set

Large 3 x 4" (7 x 10cm) glass samples of every color in the System 96 line, including Thins, Iridescents, Tints and Fracture-Streamers. Plus, examples of Dichroic glass, Frit (5 sample bags, one of each particle size), Stringer and Noodle. Annual update opportunity provided.



Dichroic Glass

System 96 partner Coatings by Sandberg makes dazzling dichroic glass in hundreds of colors, patterns and textures. For starters, try the 96-GLITZ Dichroic Glass Sampler. Six 2 x 4" (5 x 10cm) pieces of this space-age specialty glass in one convenient and affordable package.



Rod Sample Set

A complete set of System 96 Rod samples assembled into convenient 3-ring binder pages. Each sample is labeled with stock number and color description. Plenty of extra space for upcoming new colors.



Billet Sample Box

Contains generous samples of all nine Casting Billet colors. Samples measure 2 x 3" (5 x 8 cm) and are 3/4"(2cm) thick. Box weighs 5 lbs (2.2kg).



Rod Sampler

Contains an assortment of thirty 10" (25cm)-long System 96 glass rods, both Transparent and Opal colors.



96-Pack

The 96-pack is a broad variety of System 96 glass in one slick package. 27 sq.ft., 28 different colors, the 96-pack contains enough glass to let you explore what System 96 can do—without making a major financial commitment. Examples of Frit, Stringer, Noodles and Dichroic glass are included.



Patty Gray

Spectrum Glass Company (Woodinville, WA) and Uroboros Glass Studios (Portland, OR) bring a combined 50+ years of art glass manufacturing expertise to the hot glass community and the burgeoning kilnformed glass arts. Coatings by Sandberg (Orange, CA) is a highly specialized maker of the 21st century phenomenon called Dichroic Glass. In cooperation with other carefully chosen companies and individuals around the world, we manufacture the System 96® tested-compatible family of art glass products. Learn more at www.system96.com.