

*Students will learn basic jewelry composition while working with a completely unique material. Students will leave with a piece of fine silver jewelry while learning beginning sculpting, firing, and silver polishing techniques. Students will also be able to incorporate color with their metal design while learning to combine glass fusing with metal clay.*

*Teacher's Note: A kiln is required for this project. All clay listed below fires at lower temperatures. High fire clay cannot be combined with glass.*

**Materials Required:**

**Clay Options**

Low Fire Clay Assortments

<u>Item #</u>	<u>Description</u>
1039	PMC3 Assortment
1049	Art Clay Assortment

Low Fire Clay

<u>Item #</u>	<u>Description</u>
67028	PMC3 Clay 50 gram
67012	PMC3 Clay 16 gram
67025	PMC3 Clay 7 gram
70523	Art Clay Silver Low Fire Slow Dry 50 gram
70522	Art Clay Silver Low Fire Slow Dry 20 gram
	Art Clay Silver Low Fire Slow Dry 10 gram

Syringe Clay (*used for project in image*)

<u>Item #</u>	<u>Description</u>
70519	Art Clay Silver Low Fire Syringe Type with 3 tips 10 gram
67017	PMC3 Syringe Type Clay

Paste Type Clay

<u>Item #</u>	<u>Description</u>
67016	PMC3 Paste Type Clay
70515	Art Clay Silver Low Fire Overlay Paste 15 gram
70518	Art Clay Silver Low Fire Standard Paste 10 gram

**Additional Items Needed**

<u>Item #</u>	<u>Description</u>
62401	Jewelry Clay Roller
17103	Palette Knife
17101	#3 Detail Brush
10301	Stainless Steel Brush
6707	Rubber Polishing Block
67023	Tumbler & Stainless Steel Shot



**Also Needed:** Shelf Paper or Kiln Wash, Fine Grit Sand Paper (1200 grit recommended), Thin Cardboard Strips (cut to 1" x 4"), Fused Glass Cabochons, Basic Metal Clay Tools and Supplies (*see Delphi's Glass Fusing Instructions for details*).

**Directions:**

*Refer to Delphi's Beginning Silver Jewelry Clay for detailed instructions.*

1. Decorate your glass cabochon with silver clay accents to the design of your choice.
2. Once you have completed your design, allow clay to dry completely.
3. Use a very fine sand paper (1200 grit wet/dry recommended) to sand out any fine imperfections from your piece. Remember any flaws not sanded will be visible post firing.
4. Place decorated cabochon with completed silver clay embellishments directly on your kiln shelf.
5. Fire clay and glass according to low-fire clay package instructions.
6. Once your jewelry piece has cooled to room temperature, brush your piece with your stainless steel brush all over to bring out the desired silver shine.

*Teachers Note: The finished piece can be tumbled in a tumbler with stainless steel shot to bring to a high shine. Just add water and a drop of dish soap to the shot.*

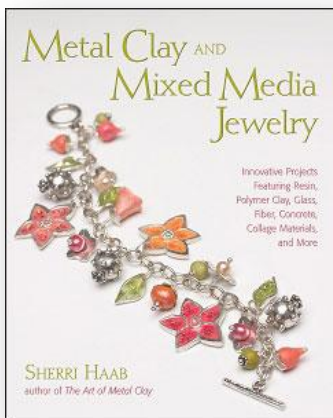
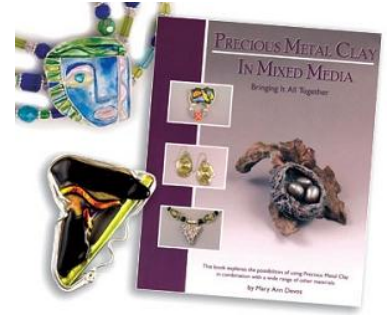


Image from *Metal Clay: The Complete Guide* Item#6763

**For additional information and instructions check out these great books!**

Precious Metal Clay in Mixed Media #6483

Discover how versatile silver jewelry clay can be. Learn to create with silver clay and glass, enamel, ceramic, polymer, porcelain and fabric. This book features 21 project ideas, step-by-step directions, and an inspiring artists' gallery.



Metal Clay and Mixed Media Jewelry #6715

One of the country's top jewelry authors, Sherri Haab, is back with more incredible jewelry projects. Learn how to easily achieve professional results combining metal clay with a variety of mixed media. This book contains over 20 innovative project ideas featuring resin, polymer clay, glass, fiber, concrete, collage materials and more. 144 pages with 280 color illustrations and simple step-by-step instructions.